

PLAT LEGEND

ALL DIMENSIONS ARE SHOWN IN FEET.
 ALL CURVILINEAR DIMENSIONS ARE SHOWN ALONG THE ARC.
 (R) DENOTES RADIAL. (NR) DENOTES NON-RADIAL.
 MONUMENTS OF IRON BARS 1/2" AND 3/8" LONG, ENCASED
 IN CONCRETE 4" IN DIAMETER, ARE AT ALL POINTS MARKED
 "O".
 ALL LOT MARKERS ARE 1/2" IRON BARS AND ARE 18" LONG.
 IDENTIFICATION CAPS ARE NOT USED.

BEARINGS ARE BASED ON RECORDED PLAT OF "SUPERVISORS
 PLAT OF INDEPENDENCE FARMS" AS RECORDED IN LIBER 14
 OF PLATS, PAGE 44, OAKLAND COUNTY RECORDS.

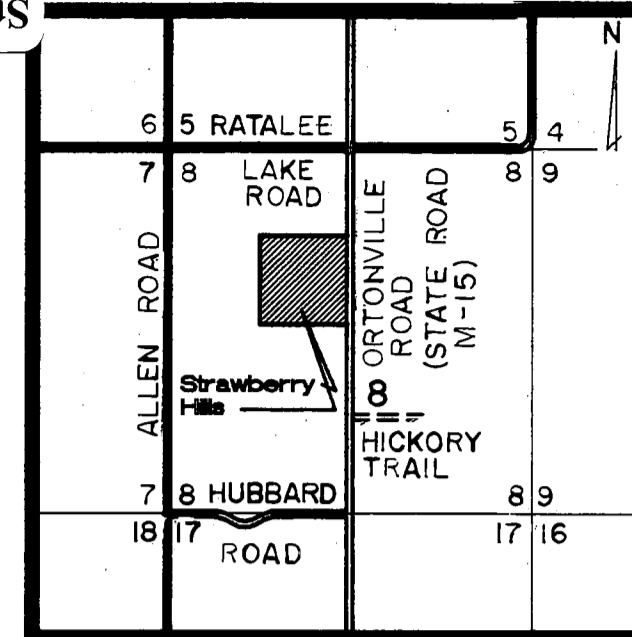
"Strawberry Hills"

**PART OF THE NORTHWEST 1/4
 OF SECTION 8, TOWN 4 NORTH, RANGE 9 EAST,
 INDEPENDENCE TOWNSHIP, OAKLAND COUNTY, MICHIGAN**

Plat 109 Drawer 8

LIBER PAGE
 SHEET 1 OF 3

Strawberry Hills



Location Map
 (NO SCALE)

NOTE: THIS PLAT IS SUBJECT TO RESTRICTIONS AS REQUIRED BY ACT 288 OF 1967, AS AMENDED
 ON CERTAIN LOTS WITH RESPECT TO THE REQUIREMENTS OF THE MICHIGAN DEPARTMENT
 OF NATURAL RESOURCES AND/OR THE MICHIGAN DEPARTMENT OF PUBLIC HEALTH
 WHICH ARE RECORDED IN LIBER 5105, PAGES 2318 THRU 255 INCLUSIVE,
 OF THE OAKLAND COUNTY RECORDS.

CURVE TABLE

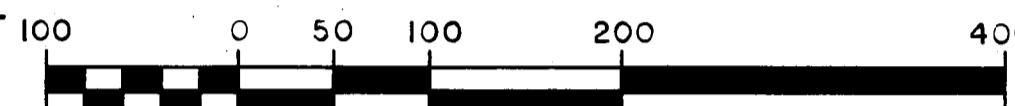
CURVE	RADIUS	ARC	TANGENT	CHORD	CHORD BEARING	DELTA
1	400.00'	78.53'	39.39'	78.40'	S 84°22'34" W	11°14'53"
2	500.00'	224.45'	114.15'	222.57'	S 88°23'16" E	25°43'14"
3	560.00'	211.09'	106.81'	209.84'	N 86°19'34" W	21°35'51"
4	300.00'	37.31'	18.68'	37.28'	N 86°26'15" E	07°07'30"
5	45.00'	38.72'	20.65'	37.53'	S 65°21'10" E	49°17'39"
6	70.00'	340.36'	60.22'	91.30'	S 00°00'00" E	278°35'19"
7	45.00'	38.72'	20.65'	37.53'	S 65°21'10" W	49°17'39"
8	360.00'	44.77'	22.41'	44.74'	N 86°26'15" E	07°07'30"
9	500.00'	188.47'	95.37'	187.36'	N 86°19'34" W	21°35'51"
10	560.00'	251.39'	127.85'	249.28'	S 88°23'16" E	25°43'14"
11	340.00'	66.75'	33.48'	66.64'	S 84°22'34" W	11°14'53"

UNPLATTED

NORTH/SOUTH 1/4
 LINE SEC. 8

NORTH 1/4 CORNER
 SECTION 8,
 TOWN 4 NORTH,
 RANGE 9 EAST
 L 13326
 P 192

GRAPHIC SCALE



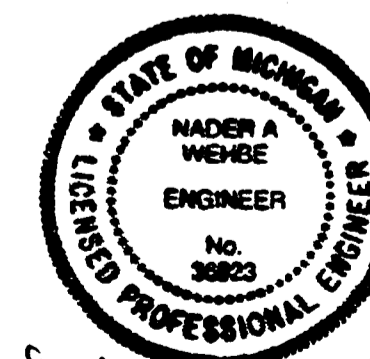
(IN FEET)
 1" = 100'



SUPERVISORS PLAT OF
 "INDEPENDENCE FARMS"
 LIBER 14 PAGE 44



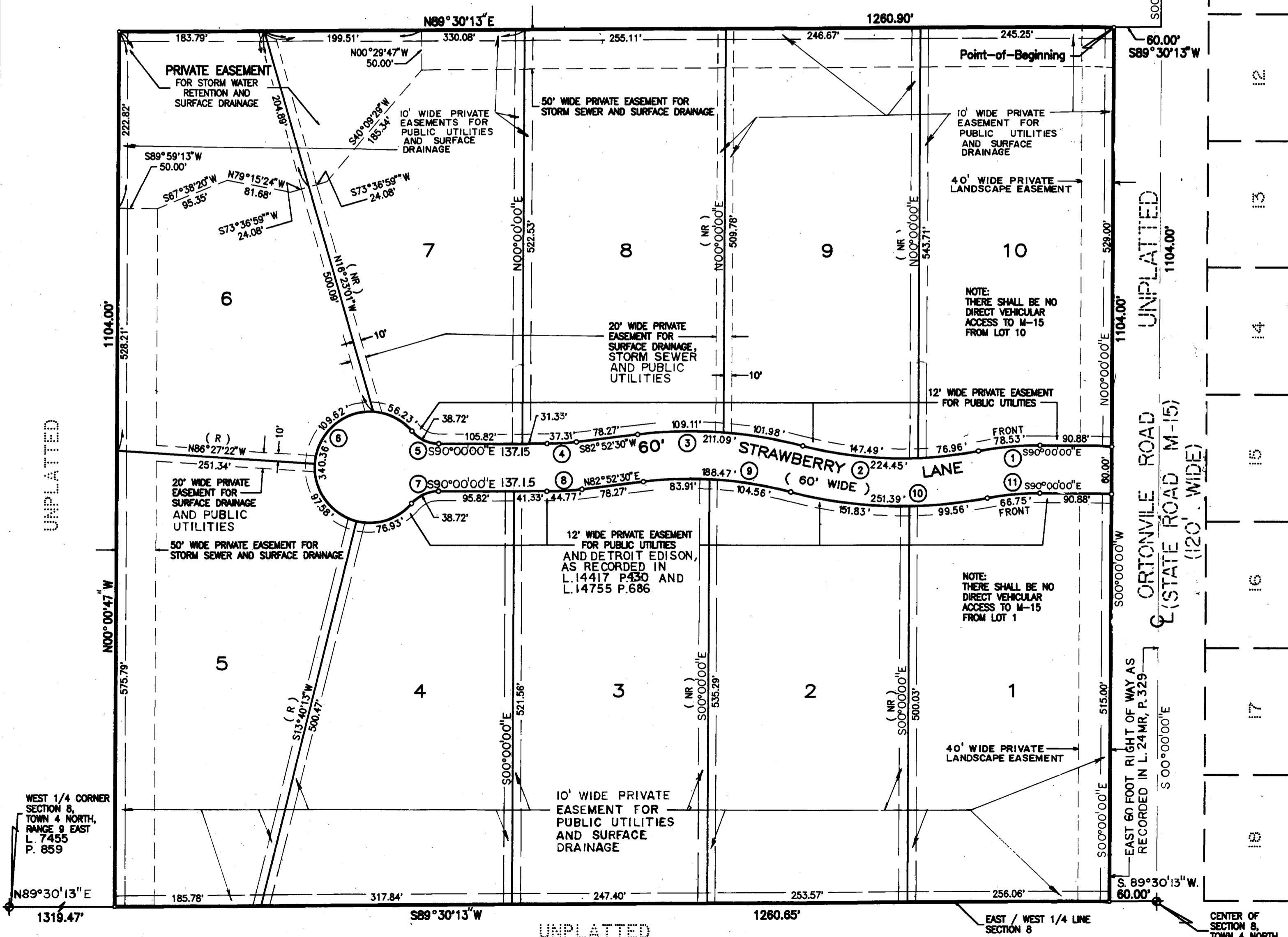
Greg L. Ash



Nader A. Wembe

LANDTECH

1533 N. Woodward Ave. Suite 150
 Bloomfield Hills, MI. 48304
 (313) 645-5242
 Fax (313) 647-0737



UNPLATTED

UNPLATTED

UNPLATTED

WEST 1/4 CORNER
 SECTION 8,
 TOWN 4 NORTH,
 RANGE 9 EAST
 L. 7455
 P. 859

EAST 60 FOOT RIGHT OF WAY AS
 RECORDED IN L. 24MR, P. 329

CENTER OF
 SECTION 8,
 TOWN 4 NORTH,
 RANGE 9 EAST L. 11476 P. 479

"Strawberry Hills"

PART OF THE NORTHWEST 1/4
OF SECTION 8, TOWN 4 NORTH, RANGE 9 EAST,
INDEPENDENCE TOWNSHIP, OAKLAND COUNTY, MICHIGAN

County Treasurer's Certificate

THE RECORDS IN MY OFFICE SHOW NO UNPAID TAXES OR SPECIAL ASSESSMENTS FOR THE FIVE YEARS PRECEEDING April 29, 1994, INVOLVING THE LANDS INCLUDED IN THIS PLAT.

Patrick M. Dohany - Chief Deputy
PATRICK M. DOHANY, OAKLAND COUNTY TREASURER

County Drain Commissioner's Certificate

APPROVED ON June 9th, 1994, AS COMPLYING WITH SECTION 192 OF ACT 288, P.A. OF 1967 AND THE APPLICABLE RULES AND REGULATIONS PUBLISHED BY MY OFFICE IN THE COUNTY OF OAKLAND.

George W. Kuhn 6/9/94
GEORGE W. KUHN, DRAIN COMMISSIONER DATE

County Road Commissioner's Certificate

APPROVED ON AUGUST 10, 1994, AS COMPLYING WITH SECTION 183 OF ACT 288, P.A. OF 1967 AND THE APPLICABLE RULES AND REGULATIONS PUBLISHED BY THE BOARD OF ROAD COMMISSIONERS OF OAKLAND COUNTY

Rudy D. Lozano
RUDY D. LOZANO, CHAIRMAN
John E. Olsen
JOHN OLSEN, VICE CHAIRMAN
Rich Vogt
RICH VOGT, COMMISSIONER

Certificate of Municipal Approval

I CERTIFY THAT THIS PLAT WAS APPROVED BY THE TOWNSHIP BOARD OF INDEPENDENCE TOWNSHIP AT A MEETING HELD September 20, 1994, AND WAS REVIEWED AND FOUND TO BE IN COMPLIANCE WITH ACT 288, P.A. OF 1967, AND THAT THE OAKLAND COUNTY DEPARTMENT OF HEALTH APPROVED THE PRELIMINARY PLAT ON July 20, 1994. ALSO, ADEQUATE SURETY HAS BEEN DEPOSITED WITH THE CLERK FOR THE PLACING OF MONUMENTS AND LOT MARKERS WITHIN ONE YEAR FROM THE ABOVE DATE.

Joan E. McCrary
JOAN E. MCCRARY, CLERK

Michigan Department of Transportation

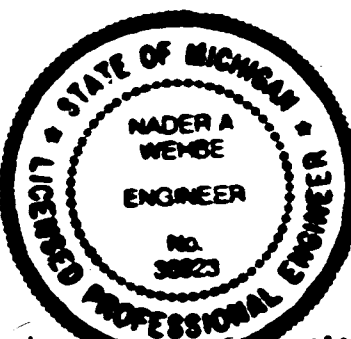
APPROVED ON November 3, 1994 AS COMPLYING WITH ACT 288, P.A. OF 1967 AND THE APPLICABLE PUBLISHED RULES AND REGULATIONS OF THE DEPARTMENT OF TRANSPORTATION

G. Robert Adams
G. ROBERT ADAMS, CHIEF DEPUTY DIRECTOR

County Plat Board Certificate

THIS PLAT HAS BEEN REVIEWED AND IS APPROVED BY THE OAKLAND COUNTY PLAT BOARD ON OCTOBER 17, 1994, 1994, AS BEING IN COMPLIANCE WITH ALL THE PROVISIONS OF ACT 288, P.A. OF 1967, AND THE PLAT BOARDS APPLICABLE RULES AND REGULATIONS.

Larry P. Crake
LARRY P. CRAKE CHAIRMAN, BOARD OF COMMISSIONERS
Lynn D. Allen
LYNN D. ALLEN COUNTY CLERK, REGISTER OF DEEDS
P. Hugh Dohany
C. HUGH DOHANY COUNTY TREASURER
Thomas M. Smith
THOMAS M. SMITH, L.L.S. COUNTY PLAT ENGINEER



Greg L. Ash
Nader A. Wells

Recording Certificate

STATE OF MICHIGAN
COUNTY OF OAKLAND

THIS PLAT WAS RECEIVED FOR RECORD ON THE 17th DAY OF November, 1994, AT 3:14 O'CLOCK PM., AND IS RECORDED IN LIBER 237 OF PLAT, PAGES 12-20.

Lynn D. Allen
LYNN D. ALLEN, CLERK, REGISTER OF DEEDS